



High Class 공압식 액츄에이터

PNEUMATIC ACTUATORS

Rack & Pinion Designed

GD-SERISE Double Acting

GD-SERISE Single Acting (Spring Return)

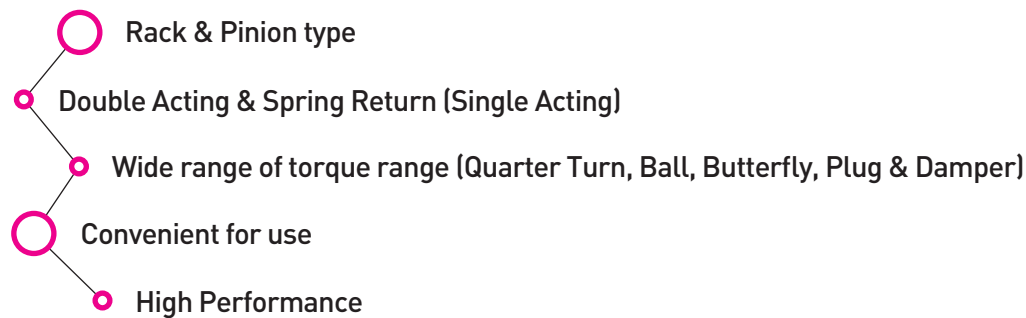


GINICE Co., Ltd
www.ginice.co.kr / www.ginice.com

GD-SERISE / GS-SERISE

DESCRIPTION

- **GD / GS series**
pneumatic actuator are designed & developed with new concept for the next generation.
- **GD / GS series**
provide various & wide solutions with following characteristics.

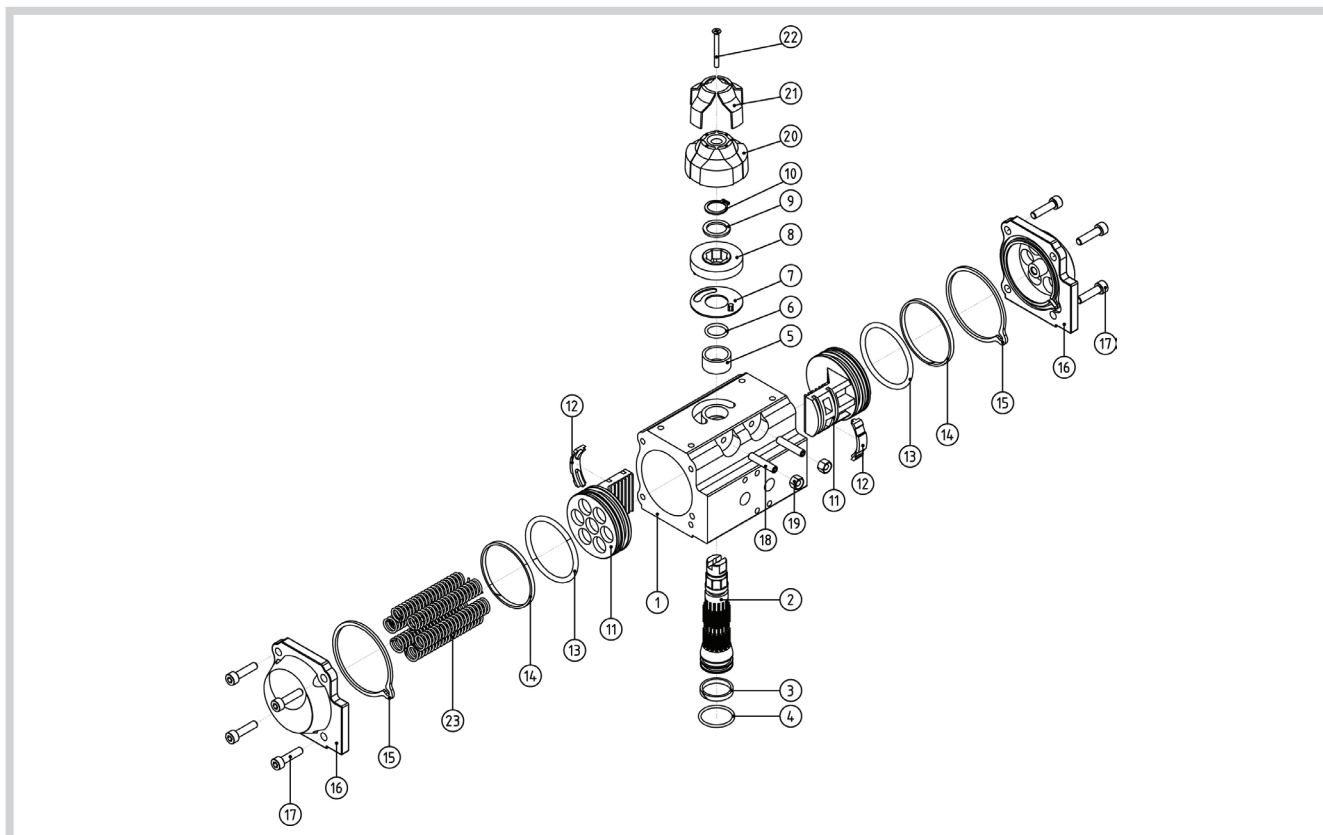


CONSTRUCTION

- 1 Aluminium alloy Body**
 - Hard anodized
 - Nickel plated
- 2 Dual piston rack & pinion designed**
- 3 Alloy steel pinion**
 - Nickel plated
- 4 Multifunction position Indicator**
- 5 DNBR Rubber pinion seal**
- 6 Internal and external stainless steel fasteners for long term corrosion resistance**
- 7 Full Open / Close position adjustment**
- 8 NAMUR accessory mounting**
 - VDI / VDE 3845
 - NAMUR Solenoid
- 9 Valve mounting pad**
 - ISO5211 / DIN 3337 (Int'l standard)



PART LIST – GD-35, GD/GS-50 ~ GD/GS - 125

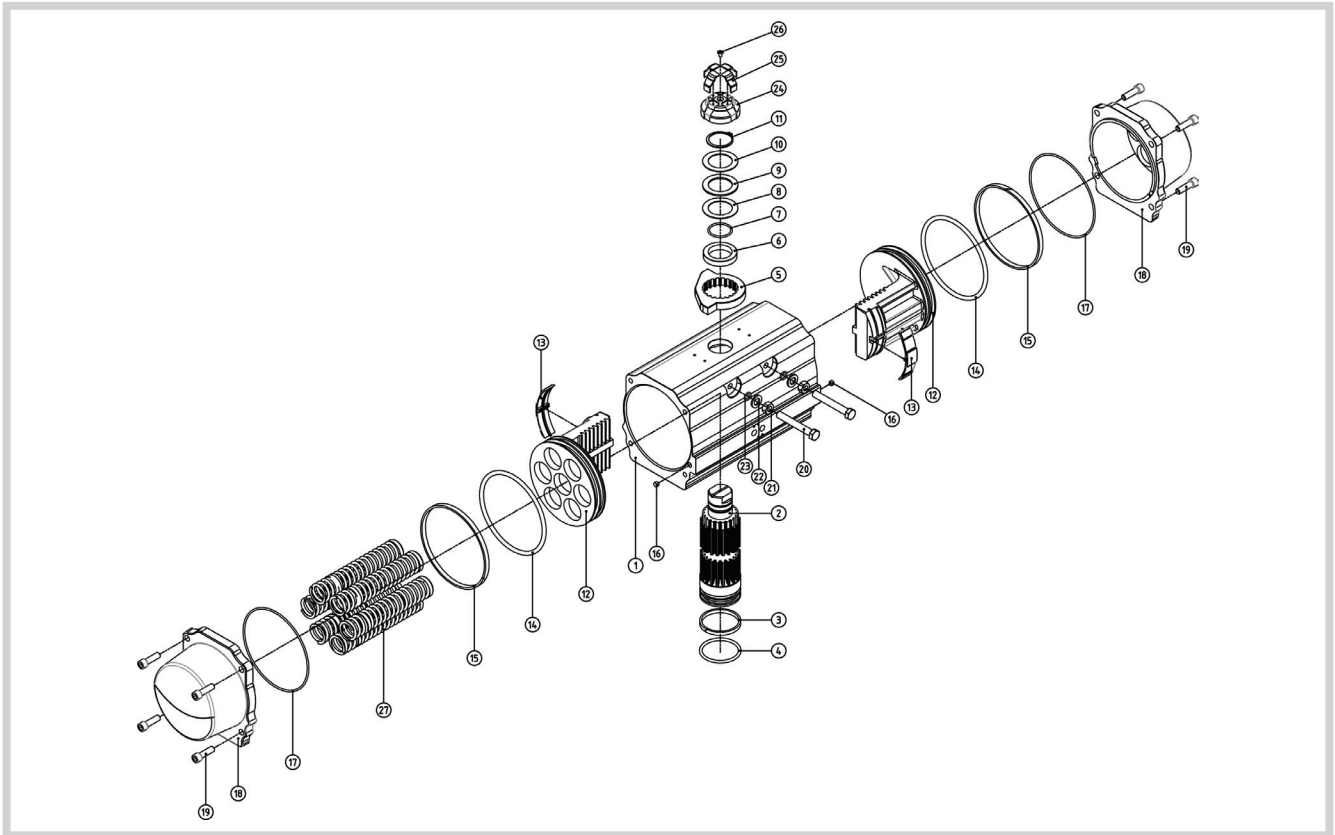


MATERIALS

No.	Unit Q'ty	Part Name	Standard material	Corrosion protection	Optional
1	1	Body	Aluminum alloy	Hard anodized	-
2	1	Shaft	Steel alloy	Nickel plated	-
3	1	Shaft Bushing (Bottom)	PTFE	-	-
4	1	Shaft O-ring (Bottom)	NBR	-	Viton / Silicone
5	1	Shaft Bushing (Top)	PTFE	-	-
6	1	Shaft O-ring (Top)	NBR	-	Viton / Silicone
7	1	Flat Bushing	PTFE	-	-
8	1	Stopper	Stainless steel	-	-
9	1	Flat Washer	Stainless steel	-	-
10	1	Snap Ring	Stainless steel	Nickel plated	-
11	2	Piston	ADC12	Hard anodized	-
12	2	Piston Guide	Acetal	-	-
13	2	Piston O-ring	NBR	-	Viton / Silicone
14	2	Piston Backup Ring	PTFE	-	-
15	2	Cover O-ring	NBR	-	Viton / Silicone
16	2	Cover	AC4C	Chromate + Polyester coated	-
17	8	Cover Bolt	Stainless steel	-	-
18	2	Stopper Bolt	Stainless steel	-	-
19	2	Stopper Nut	Stainless steel	-	-
20	1	Indicator Cap	ABS	-	-
21	4	Indicator	ABS	-	-
22	1	Indicator Bolt	Stainless steel	-	-
23	Vary	Spring	PW-1	-	-

GD-SERISE / GS-SERISE

PART LIST – GD/GS - 145 ~ GD/GS - 210



MATERIALS

No.	Unit Q'ty	Part Name	Standard material	Corrosion protection	Optional
1	1	Body	Aluminum alloy	Hard anodized	-
2	1	Shaft	Steel alloy	Nickel plated	-
3	1	Shaft Bushing [Bottom]	PTFE	-	-
4	1	Shaft O-ring [Bottom]	NBR	-	Viton / Silicone
5	1	Stopper	Stainless steel	-	-
6	1	Shaft Bushing [Top]	PTFE	-	-
7	1	Shaft O-ring [Top]	NBR	-	Viton / Silicone
8	1	Flat Washer	Stainless steel	-	-
9	1	Flat Bushing	PTFE	-	-
10	1	Flat Washer	Stainless steel	-	-
11	1	Snap Ring	Stainless steel	Nickel plated	-
12	2	Piston	ADC12	Hard anodized	-
13	2	Piston Guide	Acetal	-	-
14	2	Piston O-ring	NBR	-	Viton / Silicone
15	2	Piston Backup Ring	PTFE	-	-
16	2	O-ring	NBR	-	-
17	2	Cover O-ring	NBR	-	Viton / Silicone
18	2	Cover	AC4C	Chromate + Polyester coated	-
19	8	Cover Bolt	Stainless steel	-	-
20	2	Stopper Bolt	Stainless steel	-	-
21	2	Stopper Nut	Stainless steel	-	-
22	2	Stopper Bolt Washer	Stainless steel	-	-
23	2	Stopper Bolt O-ring	NBR	-	-
24	1	Indicator Cap	ABS	-	-
25	4	Indicator	ABS	-	-
26	1	Indicator Bolt	Stainless steel	-	-
27	Vary	Spring	PW-1	-	-

ACTUATOR SPECIFICATION

- **Working Pressure** Max. 10bar (145psig), Double acting / Spring return : 2.5 ~ 8bar
- **Working Temperature** Standard / -20°C ~ 80°C (-4°F ~ 175°F), Available up to -35°C when change O-Ring material.
- **Operating Media** Clean Dry Air
- **Rotation** 90°±5°
- **Life cycle** 500,000 operations

ACTUATOR APPLICATION SIZE

Note) TORQUE : AIR PRESSURE - 5bar(Standard)

Type	Model	Valve Limit of application (적용범위)	
		Butterfly valve(10K)	2Way Flanged Ball valve(10K)
Double Acting	GD-35	-	15A
	GD-50	40A, 50A	15A, 20A
	GD-63	50A, 65A	25A, 32A
	GD-75	80A ~ 100A	40A, 50A
	GD-88	125A, 150A	65A, 80A
	GD-100	200A	80A, 100A
	GD-125	200A ~ 250A	100A, 125A
	GD-145	250A	125A
	GD-170	300A	125A, 150A
	GD-190	300, 350A	150A, 200A
	GD-210	400A ~ 450A	200A, 250A

Type	Model	Valve Limit of application (적용범위)	
		Butterfly valve(10K)	2Way Flanged Ball valve(10K)
Single Acting	-	-	15A
	GS-50	40A	15A, 20A
	GS-63	40A, 50A	20A, 25A
	GS-75	65A	32A, 40A
	GS-88	65A, 80A	40A
	GS-100	100A, 125A	40A, 50A
	GS-125	125A, 150A	65A~100A
	GS-145	200A	100A, 125A
	GS-170	250A	125A, 150A
	GS-190	300A	150A
	GS-210	350A ~ 400A	200A

CONNECTION



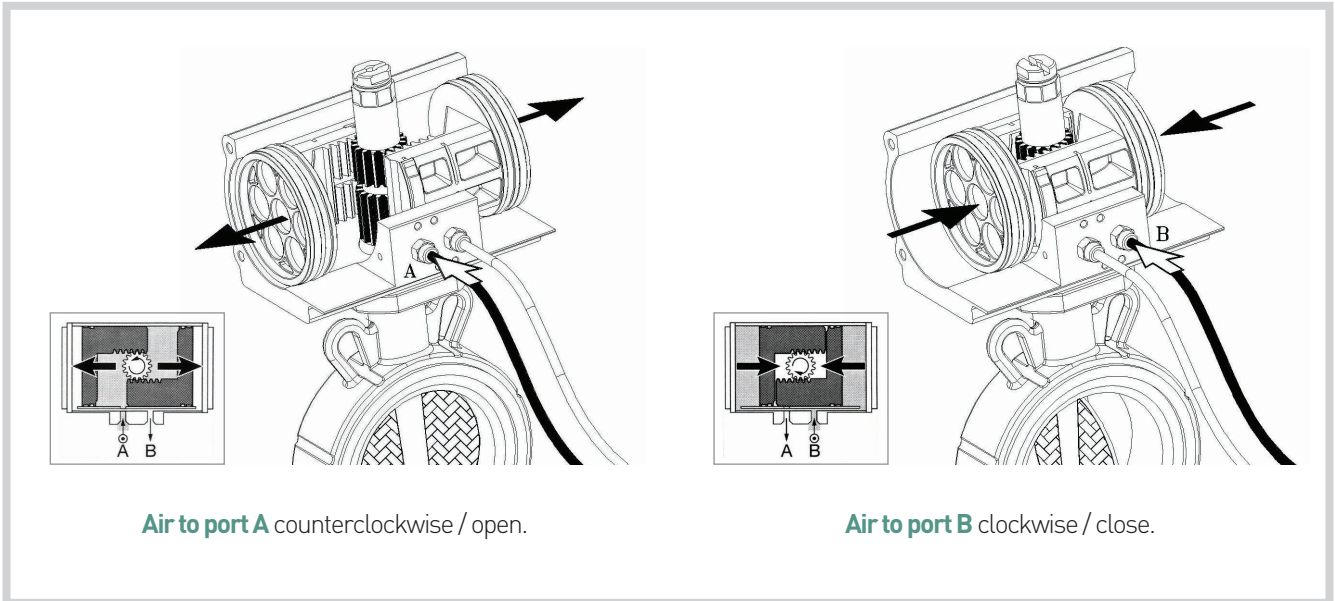
- Side mounting connection is designed in accordance with VDI, VDE3845 NAMUR standard to install solenoid valve.
- With Stopper (Stop arrangement)



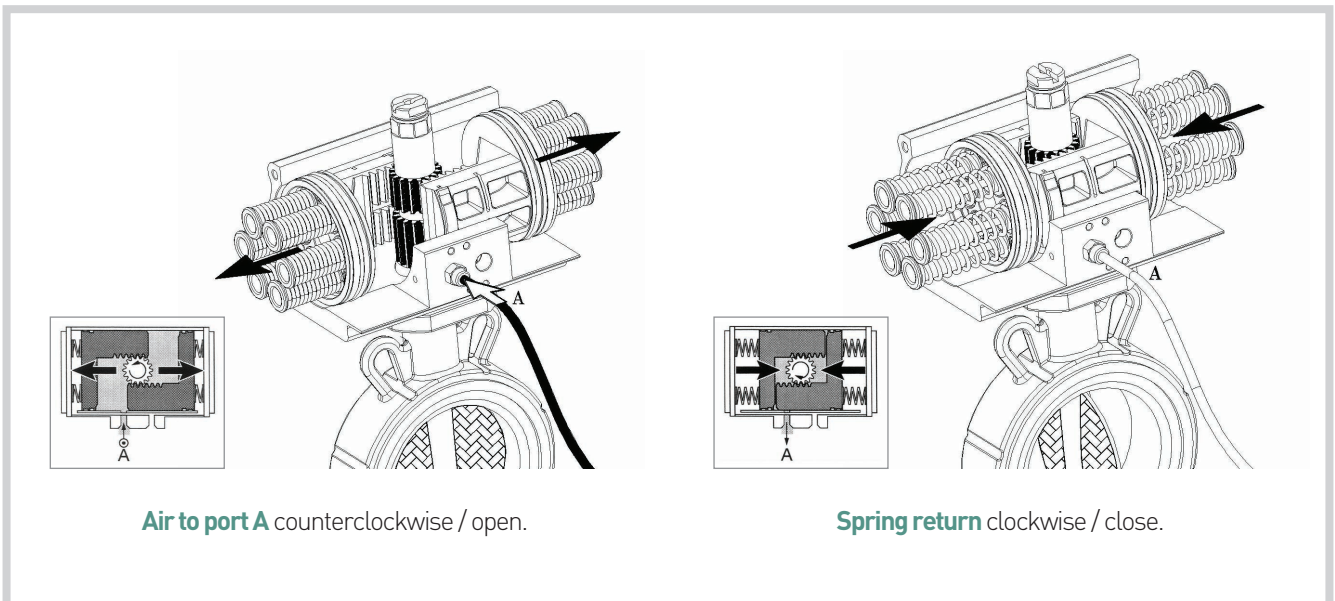
- Bottom mounting connection is designed in accordance with ISO5211 and DIN3337 standard for direct mounting with valves.
- Star drive and square insert permits easy installation of the actuator directly.

GD-SERISE / GS-SERISE

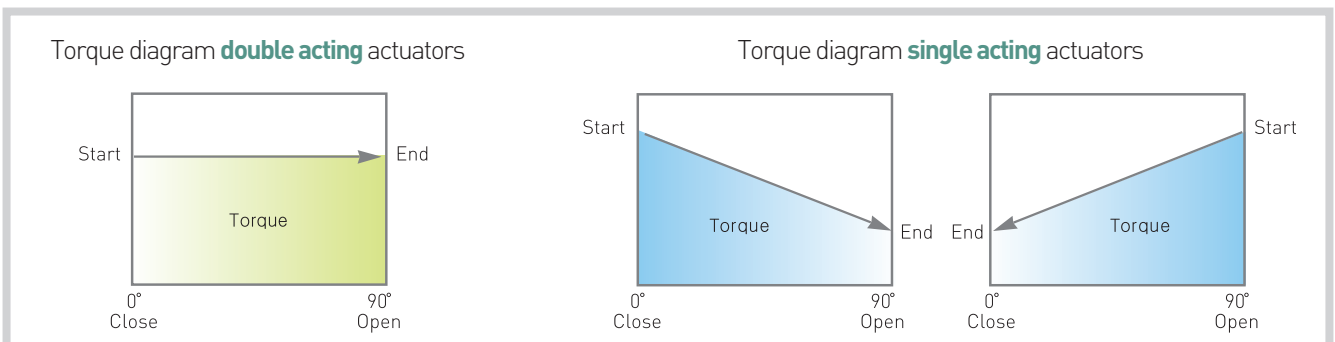
DOUBLE ACTING OPERATION



SPRING RETURN OPERATION



TORQUE DIAGRAM



GD-SERIES Double acting Torque in Nm

※ 한국산업기술시험원(ktl) 토크(Torque) 테스트 시험 인증 (No:07-1533-485)

SUPPLY PRESSURE	2.5Bar	3Bar	3.5Bar	4Bar	4.2Bar	4.5Bar	5Bar	5.5Bar	6Bar	7Bar	8Bar
Model											
GD - 35	3.4	3.8	4.5	5.3	5.8	6.2	7.1	7.8	8.6	10.2	10.7
GD - 50	8.1	8.8	10.9	12.7	13.2	14.2	16	17.6	19.3	22.7	24.5
GD - 63	13	16	18	21	23	24	26	29	32	37	42
GD - 75	27	32	38	44	46	50	56	62	67	79	92
GD - 88	47	55	64	73	79	82	91	100	110	130	149
GD - 100	76	81	94	108	113	127	136	149	164	192	216
GD - 125	148	171	200	228	240	259	289	316	346	391	437

GS-SERIES Single acting Torque in Nm

※ 한국산업기술시험원(ktl) 토크(Torque) 테스트 시험 인증 (No:07-1533-485)

SUPPLY PRESSURE		Spring Return Torque (Nm)																				Spring Torque				
Model	Spring Set	2.5Bar		3Bar		3.5Bar		4Bar		4.2Bar		4.5Bar		5Bar		5.5Bar		6Bar		7Bar		8Bar		90° End	0° Start	
		0° Start	90° End	0° Start	90° End	0° Start	90° End	0° Start	90° End	0° Start	90° End	0° Start	90° End	0° Start	90° End	0° Start	90° End	0° Start	90° End	0° Start	90° End					
GS - 50	S5	5.6	3.9	6.9	6.1	8.8	7	10.3	8.3	10.8	8.9	12.3	10.3	13.7	11.8									5.4	3.8	
	S6	4.9	2.9	6.3	4.3	7.8	6	9.2	7.6	9.8	8.2	11	9.3	12.7	10.8	14	12.4							7.4	5.3	
	S7			5.4	3.4	6.5	4.4	8.3	5.9	8.8	6.8	9.4	7	11.3	8.8	12.7	9.9	14.2	11.3					6.5	4.2	
	S8					6.4	3.6	8.3	5.4	8.4	6.5	9.5	7.6	10.6	8.8	12	9.5	14	12	17.2	15.7			7.8	4.9	
	S9							7.1	4.7	7.5	4.6		8.3	5	10	6.5	11.3	8.4	12.9	9.3	16.2	11.9	19.6	16.2	8.8	5.4
	S10											7.1	4.9	8.3	7.8	10.8	7.8	12.3	8.9	15.2	11.9	17.7	14.2	8.3	4.9	
	S11													9.3	5.9	10.3	7.6	11.9	9.3	15.2	12.5	18.1	15.7	10.3	6.5	
S12															10.3	7	7.4	8.3	14.7	11.8	18.1	14.7	10.8	8.3		
GS - 63	S5	9.8	7.5	11.4	9.8	14.2	13.5	16.3	15.2	17.8	17.2	19.6	18.2	21.6	19.6									7.3	4.4	
	S6	7.5	4.9	9.4	6.4	11.3	7.8	14.9	10.5	15.9	10.8	17.2	12.3	20.1	14.2	22.8	16.1							7.8	5.4	
	S7			10.8	7.6	12.2	9.3	14.2	11	15.2	12	17	13.9	19.7	15.4	22.2	18.3	30	23					9.3	5.2	
	S8			14	8	16	11	18	12	19	14	22	17	26	20	26	21	29	24	35	29			12	7	
	S9							16	10	16	9	18	10	21	12	24	16	27	17	32	21	38	30	14	9	
	S10											19	12	21	11	24	13	27	15	32	19	37	29	14	7	
	S11													20	12	23	16	25	18	31	24	36	32	17	10	
S12															22	14	25	15	31	20	35	25	20	12		
GS - 75	S5	19	12	25	17	31	21	38	28	41	31	51	38	51	41									20	13	
	S6	15	8	23	13	28	21	36	23	38	27	41	33	48	37	53	43							21	13	
	S7			19	10	24	13	32	20	38	25	39	27	43	33	49	37	56	45					28	18	
	S8					24	13	30	17	33	19	43	29	44	30	50	35	55	40	67	53			32	20	
	S9							26	15	29	16	33	21	38	24	44	31	51	36	63	49	75	62	35	21	
	S10											30	19	36	19	42	30	47	34	60	46	72	56	37	23	
	S11													36	20	42	26	47	31	58	43	68	52	38	26	
S12															39	23	48	29	59	41	68	53	43	31		
GS - 88	S5	28.9	14.6	36.4	22.5	45.6	30.5	55.8	40.6	58.8	44.4	64.4	48.1	73.6	57.6									29.1	18.2	
	S6	24.6	10.1	32.6	18.9	42.3	28	51.5	36.6	55.6	41	61	46.4	70.2	55.3	79.3	64.9							34	21.7	
	S7			29.9	12.6	37.7	22	47.1	30.8	51.5	34.2	57	40.1	65.9	48.8	72.5	58.2	84.5	67.7					39.6	25.7	
	S8					34.5	13.5	42.7	19.3	47.3	22.7	52.5	22.8	61.6	37.4	70.8	40.1	80.7	45.8	99.4	54.1			45.4	29.4	
	S9							40.8	16.9	43.1	21.2	49	27.4	57.9	34.3	67	42.5	76.4	50	95.2	60	113.6	71.8	52.9	32.3	
	S10									39.6	17.7	44.9	21.8	54	29.7	63.1	39.3	72.6	48.7	90.8	67	109.8	81.7	57.2	35.6	
	S11											43.2	16.4	50.8	24.6	59.9	33.6	69.2	43.2	88.1	62.3	105.8	78.7	63.1	37.7	
S12													48.8	19.6	56.1	28.2	65	37.6	83.9	54.9	102.3	68.9	68.8	42.6		
GS - 100	S5	44.6	27.4	57.8	35.6	73.3	51.2	85.2	61.6	90.6	65.8	99	76.5	112.9	89.1									44.9	24	
	S6	42.8	14.3	54.2	27.2	68.1	41.1	80.9	54.5	90.2	61.2	96.3	68.8	108.1	81.5	121.6	95.4							53.5	28.3	
	S7			44.7	16.4	62.5	30.5	76.3	44.5	82.3	50.3	90.3	58.6	103.8	71.8	117	85.7	131.4	100.9					62.5	37	
	S8					54.3	22.3	71.8	35	73.2	39.4	85.5	47.5	99.3	60.8	113.5	73.8	127	89.8	154.6	111.6			71.3	38.1	
	S9							57.9	28.1	73.2	32.6	79.9	38.7	94.3	53.6	111.5	68.9	122.5	79.6	150.3	110.4	177.2	135.7	79.9	42.3	
	S10									69.3	22.4	75.1	30.4	86.4	43.3	100.2	57.2	113.9	71	141.4	97.6	168.2	125.4	90.2	47.4	
	S11											75.2	32	83.4	33.5	97.3	47	110.5	61.7	138.9	90.3	168.6	120.1	101.1	53.6	
S12													83.1	26.6	92.4	38.4	105.9	53.3	133.3	80.5	162.2	108.9	107.4	57.1		
S12													83.1	26.6	92.4	38.4	105.9	53.3	133.3	80.5	162.2	108.9	107.4	57.1		
GS - 125	S5	78.4	42	102.6	64	130.8	88.6	157.3	110.6	168.4	123.3	189.8	146.3	214.9	171.7									94.8	58.7	
	S6	67.9	25.6	90.4	48.5	118.7	74.4	146.9	99.2	157.2	109.6	175.7	122	206.4	156.6	229	176.4							115.3	61.3	
	S7			87.5	33.8	106.6	55.8	133.6	82.8	144.2	92.7	162.3	114.1	189.1	138.9	213.6	164.1	243	194.1					122.4	76.4	
	S8					104.1	54.1	129.7	79.2	141.4	88.7	159.5	105.7	185.9	130.4	213.4	156.6	241.3	182.7	296	231.1			127.8	86.8	
	S9							117.8	55.4	123.1	59.1	137.8	76.3	165	103.1	191.8	131.7	226.5	164.2	277.9	222.5	332.4	265.6	176.3	106.8	
	S10									115.9	37.9	125.5	44.2	152.5	70.1	179.9	95.8	207.8	123.6	246.3	180.8	318.8	233.6	196.3	120.3	
	S11											125.4	35.6	144.9	58.3	172	86	200.9	116.8	258.4	167.5	312.8	222	214	130	
S12													141.8	42.4	159	63.2	185.6	89.5	241.6	147.8	297.2	201.1	231.3	143.6		

GD-SERISE / GS-SERISE

GD-SERIES Double acting Torque in Nm

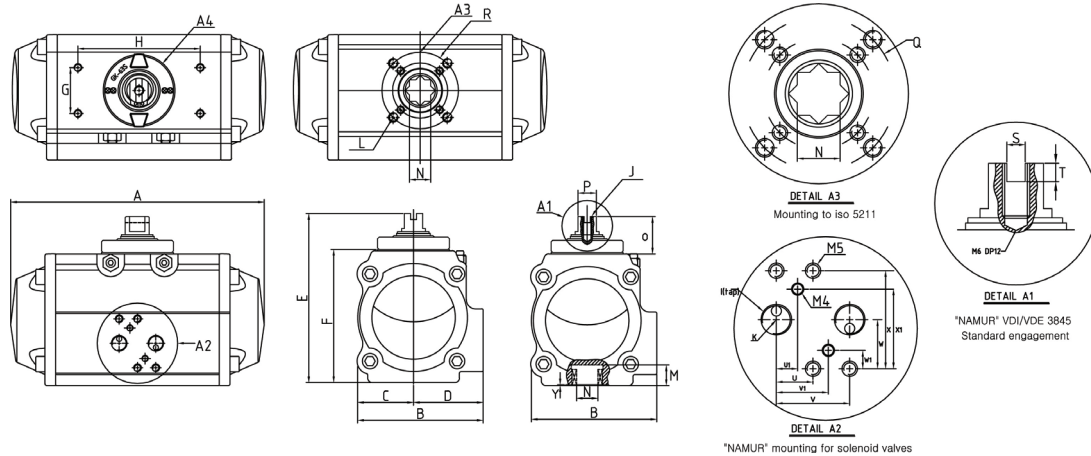
Model	BAR@ PSI@	2.8	4.2	5	5.6	7	8.4
		40	60	70	80	100	120
GD - 145	N.m	209	314	374	418	523	628
	lbf.in	1852	2778	3307	3704	4630	5556
GD - 170	N.m	393	589	701	785	982	1178
	lbf.in	3475	5213	6206	6951	8688	10426
GD - 190	N.m	584	876	1043	1168	1460	1752
	lbf.in	5168	7752	9228	10336	12920	15504
GD - 210	N.m	685	1027	1223	1370	1712	2054
	lbf.in	6061	9091	10823	12121	15152	18182

GS-SERIES Single acting Torque in Nm

Model	SPRING SIDE (5 STD.)		SPRING TORQUE		2.8Bar 40psi		4.2Bar 60psi		5.6Bar 80psi		7Bar 100psi		
			END	BREAK	BREAK	END	BREAK	END	BREAK	END	BREAK	END	
GS - 145	2	N.m	59.82	103.84	125.17	169.19	240.29	284.31					
		Lb.in	530	920	1109	1499	2129	2519					
	3	N.m	89.73	155.76	73.36	139.39	188.37	254.4	302.37	368.4			
		Lb.in	795	1380	650	1235	1669	2254	2679	3264			
	4	N.m	119.64	207.67			136.46	224.49	250.45	338.49	364.67	452.6	
		Lb.in	1060	1840			1209	1989	2219	2999	3231	4010	
	5	N.m	149.55	259.59			84.65	194.7	198.53	308.58	312.53	422.57	
		Lb.in	1325	2300			750	1725	1759	2734	2769	3744	
	6	N.m	179.46	311.51					146.61	278.67	260.61	392.66	
		Lb.in	1590	2760					1299	2469	2309	3479	
	GS - 170	2	N.m	83.52	138.83	169.19	224.49	330.59	385.89				
			Lb.in	740	1230	1499	1989	2929	3419				
3		N.m	124.15	207.11	123.59	206.55	262.3	345.26	411.29	494.24			
		Lb.in	1100	1835	1095	1830	2324	3059	3644	4379			
4		N.m	164.79	275.4			194.02	304.63	343	453.61	487.58	485.33	
		Lb.in	1460	2440			1719	2699	3039	4019	4320	4300	
5		N.m	204.85	344.24			125.28	264.67	274.15	413.54	418.62	558.01	
		Lb.in	1815	3050			1110	2345	2429	3664	3709	4944	
6		N.m	244.92	413.09					205.3	373.48	349.77	517.95	
		Lb.in	2170	3660					1819	3309	3099	4589	
GS - 190		2	N.m	118.51	205.42	229.01	315.91	472.8	559.71				
			Lb.in	1050	1820	2029	2799	4189	4959				
	3	N.m	177.77	308.13	126.41	256.77	370.09	500.45	583.41	713.77			
		Lb.in	1575	2730	1120	2275	3279	4434	5169	6324			
	4	N.m	237.02	410.84			267.38	441.2	480.7	654.51	693	866.82	
		Lb.in	2100	3640			2369	3909	4259	5799	6140	7680	
	5	N.m	296.28	513.54			164.79	382.05	377.99	595.26	583.41	800.68	
		Lb.in	2625	4550			1460	3385	3349	5274	5169	7094	
	6	N.m	355.53	616.25					275.28	536	480.7	741.42	
		Lb.in	3150	5460					2439	4749	4259	6569	
	GS - 210	2	N.m	156.88	274.27	344.13	461.51	691.2	808.58				
			Lb.in	1390	2430	3049	4089	6124	7164				
3		N.m	235.33	411.4	207.11	383.18	554.06	730.14	865.01	1041.08			
		Lb.in	2085	3645	1835	3395	4909	6469	7664	9224			
4		N.m	313.77	548.53			416.93	651.69	727.88	962.64	1027.09	1261.85	
		Lb.in	2780	4860			3694	5774	6449	8529	9100	11180	
5		N.m	392.21	685.67			279.91	573.36	590.74	884.2	889.84	1183.3	
		Lb.in	3475	6075			2480	5080	5234	7834	7884	10484	
6		N.m	470.65	822.8					453.61	805.76	752.71	1104.85	
		Lb.in	4170	7290					4019	7139	6669	9789	

DIMENSION

- **Double** GD-35, GD-50, GD-63, GD-75, GD-88, GD-100, GD-125, GD-145, GD-170, GD-190, GD-210
- **Single** - , GS-50, GS-63, GS-75, GS-88, GS-100, GS-125, GS-145, GS-170, GS-190, GS-210

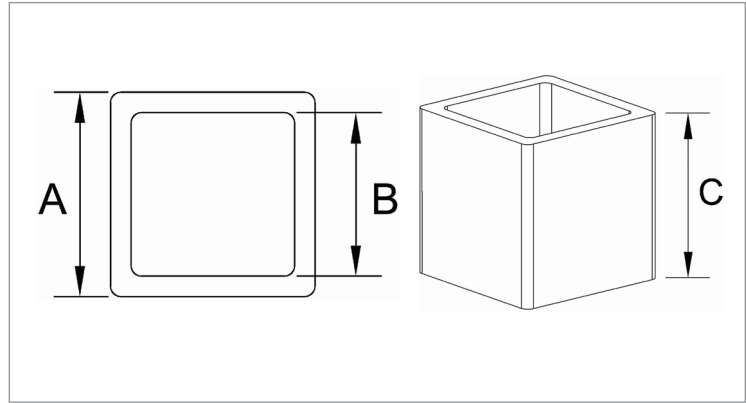


Model	L (ISO 5211)		R		A	B	C	D	E	F	G	H	I	J	K	O	P	S	T	U	U1	V	V1	W	W1	X	X1
	Q	M	N																								
GD -35	F03/F05 Ø36/Ø50	M5 10	M6 9	111	58	23	35	72	52	25	50	PT	M6	1/8°	20	10	4	4	12	7	24	17	16	6	32	26	
GD -50	F03/F05 Ø36/Ø50	M5 12	M6 11	144	69	28	41	89	69	30	80	PT	M6	1/8°	20	12	4	4	12	7	24	17	16	6	32	26	
GD -63	F05/F07 Ø50/Ø70	M6 16	M8 14	166	82	36	46	111	86	30	80	PT	M6	1/8°	20	12	4	4	12	7	24	17	16	6	32	26	
GD -75	F05/F07 Ø50/Ø70	M6 18	M8 17	213	93	40	53	128	103	30	80	PT	M6	1/8°	20	16	4	4	12	7	24	17	16	6	32	26	
GD -88	F05/F07 Ø50/Ø70	M6 19	M8 17	253	108.5	49.5	59	136	116	30	80	PT	M6	1/4°	20	12	4	4	12	7	24	17	16	6	32	26	
GD -100	F07/F10 Ø70/Ø102	M8 22	M10 17	296	123	56.8	67	152	132	30	80	PT	M6	1/4°	20	12	4	4	12	7	24	17	16	6	32	26	
GD -125	F07/F10 Ø70/Ø102	M8 24	M10 22	352	150	69	80	195	159	30	80	PT	M6	1/4°	20	12	4	4	12	7	24	17	16	6	32	26	
GD -145	F10/F12 Ø102/Ø125	M10 30	M12 27	438.6	164.9	75.4	89.5	211.5	182	30	130	PT	M6	1/4°	29.5	29.5	4	4	12	-	24	-	16	-	32	-	
GD -170	F10/F12 Ø102/Ø125	M10 30	M12 27	561.3	199	92	107	243	214	30	130	PT	M6	1/4°	29	40	4	4	12	-	24	-	16	-	32	-	
GD -190	F10/F14 Ø102/Ø140	M10 43	M16 36	601.8	206.3	103.1	103.1	264	234.9	30	130	PT	M6	1/4°	29.1	40	4	4	12	-	24	-	16	-	32	-	
GD -210	F12/F16 Ø125/Ø165	M12 43	M20 36	639	226.3	113.1	113.1	283.8	254.7	30	130	PT	M6	1/4°	29.1	40	4	4	12	-	24	-	16	-	32	-	

ACTUATOR MODEL			GD-35	GD/GS-50	GD/GS-63	GD/GS-75	GD/GS-88	GD/GS-100	GD/GS-125	GD/GS-145	GD/GS-170	GD/GS-190	GD/GS-210
APPROXIMATE WEIGHT	DA	kg	0.6	1.1	1.8	2.9	4.34	6.2	11	18.5	29.5	35	43
	SR	kg	-	1.26	2	3.34	4.89	7.05	12.9	21	34.9	42	52
OPERATING TIME	DA	OPEN(sec)	0.15	0.15	0.2	0.25	0.4	0.5	0.9	1.2	1.75	2.35	3.1
	DA	CLOSE(sec)	0.15	0.2	0.25	0.35	0.5	0.7	1.2	1.5	2.1	2.95	4
	SR	OPEN(sec)	-	0.2	0.25	0.3	0.5	0.6	1.1	1.4	1.95	2.7	3.5
	SR	CLOSE(sec)	-	0.25	0.3	0.45	0.6	0.9	1.4	1.8	2.45	3.4	4.5
AIR VOLUME(litres)	DA	OPEN	0.04	0.08	0.15	0.3	0.5	0.7	1.53	2.4	3.7	5.1	7.8
	DA	CLOSE	0.05	0.14	0.25	0.48	0.77	1.1	2.33	3.8	5.55	8.2	8.2
	SR	OPEN	-	0.08	0.15	0.3	0.5	0.7	1.54	2.4	3.7	5.1	7.8
	SR	CLOSE	-	0.08	0.15	0.3	0.5	0.7	1.54	2.4	3.7	5.1	7.8

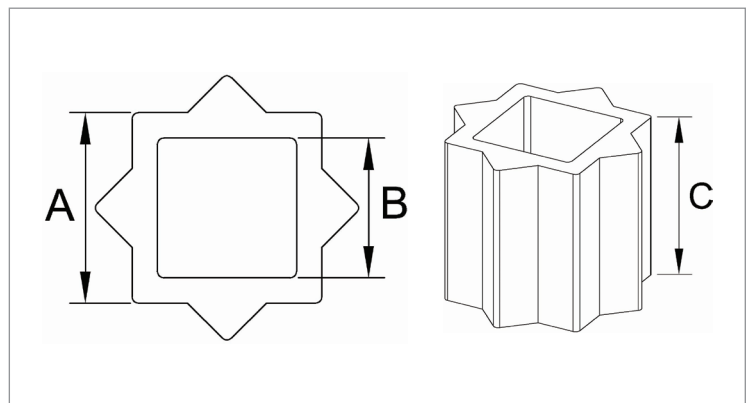
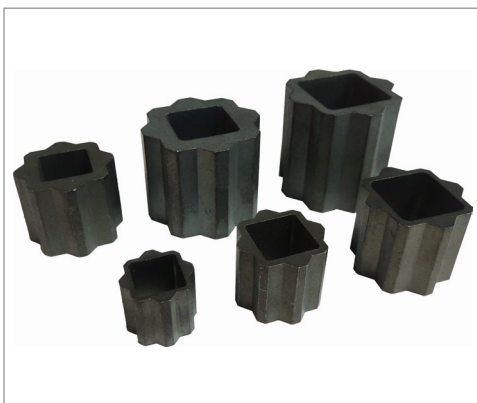
DIMENSION

■ Single Square Adapter (Dimensions)



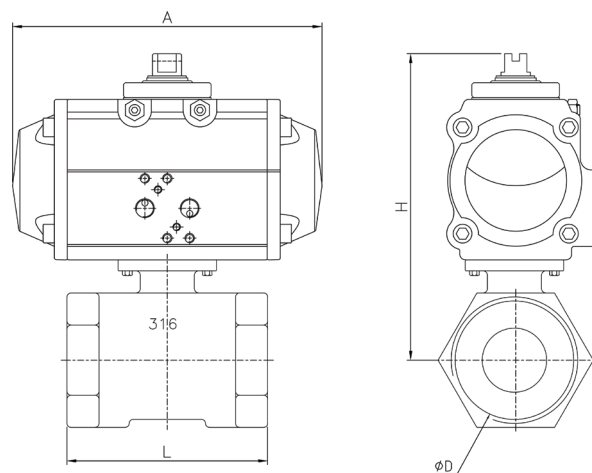
No.	Model	A [mm]	B [mm]	C [mm]	적용 모델
1	SS-1109	11	9	10	GD,GS-50
2	SS-1409	14	9	16	GD,GS-63
3	SS-1411	14	11	16	GD,GS-63
4	SS-1711	17	11	17	GD,GS-75, 88, 100
5	SS-1714	17	14	17	GD,GS-75, 88, 100
6	SS-2217	22	17	22	GD,GS-125
7	SS-2722	27	22	27	GD,GS-145, 170

■ Double Square Adapter (Dimensions)



No.	Model	외경 [mm]	내경 [mm]	높이 [mm]	적용 모델
1	DS-1109	11	9	12	GD,GS-50
2	DS-1409	14	9	15	GD,GS-63
3	DS-1411	14	11	15	GD,GS-63
4	DS-1711	17	11	18	GD,GS-75, 88, 100
5	DS-1714	17	14	18	GD,GS-75, 88, 100
6	DS-2214	22	14	24	GD,GS-125
7	DS-2217	22	17	24	GD,GS-125
8	DS-2717	27	17	34	GD,GS-145, 170
9	DS-2722	27	22	34	GD,GS-145, 170
10	DS-3627	36	27	43	GD,GS-190, 210

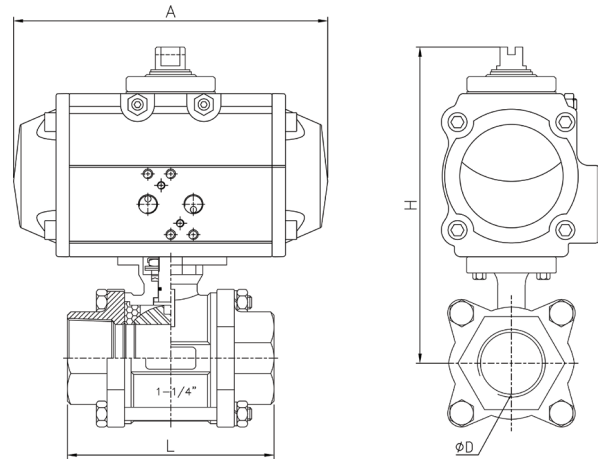
1PIECE SCREWED BALL VALVE



SIZE		Valve	Actuator	ød	L [mm]	H [mm]	A [mm]	Stem [mm]	ISO5211 PCD
Inch	mm								
3/8"	10A	DV21-10	GD-35	7	45	109.5	111	9	F03,F05
			GS-50			126.5	144	11	F03,F05
1/2"	15A	DV21-15	GD-35	9.2	50	109.5	111	9	F03,F05
			GS-50			126.5	144	11	F03,F05
3/4"	20A	DV21-20	GD-35	12.5	60	109.5	111	9	F03,F05
			GS-50			126.5	144	11	F03,F05
1"	25A	DV21-25	GD-35	15	73	109.5	111	9	F03,F05
			GS-50			126.5	144	11	F03,F05
1-1/4"	32A	DV21-32	GD-35	20	78	109.5	111	9	F03,F05
			GS-50			126.5	144	11	F03,F05
1-1/2"	40A	DV21-40	GD-50	25	89	126.5	144	11	F03,F05
			GS-63			126.5	166	14	F05,F07
2"	50A	DV21-50	GD-50	32	100	126.5	144	11	F05,F07
			GS-63			148.5	166	14	F05,F07

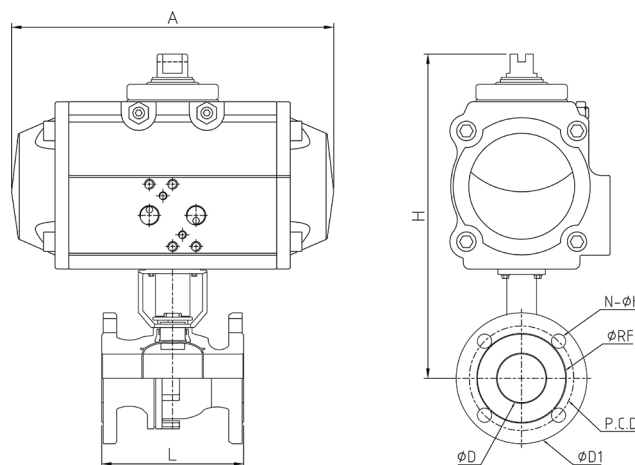
GD-SERISE / GS-SERISE

3PIECE SCREWED BALL VALVE



SIZE		Valve	Actuator	ød	L [mm]	H [mm]	A [mm]	Stem [mm]	ISO5211 PCD
Inch	mm								
3/8"	10A	DV23-10	GD-35	12.8	63.5	109	111	9	F03,F05
			GS-50			126	144	11	F03,F05
1/2"	15A	DV23-15	GD-35	15	63.5	109	111	9	F03,F05
			GS-50			126	144	11	F03,F05
3/4"	20A	DV23-20	GD-35	20	72.5	117	111	9	F03,F05
			GS-50			134	144	11	F03,F05
1"	25A	DV23-25	GD-50	25	81	142.5	144	11	F03,F05
			GS-63			164.5	166	14	F05,F07
1-1/4"	32A	DV23-32	GD-50	32	94.5	148	144	11	F03,F05
			GS-75			187	213	17	F05,F07
1-1/2"	40A	DV23-40	GD-63	40	108	185.8	166	11	F05,F07
			GS-75			202.8	213	17	F05,F07
2"	50A	DV23-50	GD-63	50	121.5	194.5	166	11	F05,F07
			GS-100			235.5	296	17	F07,F10
2-1/2"	65A	DV23-65	GD-88	65	157.5	244.8	253	17	F05,F07
			GS-100			260.8	296	17	F07,F10

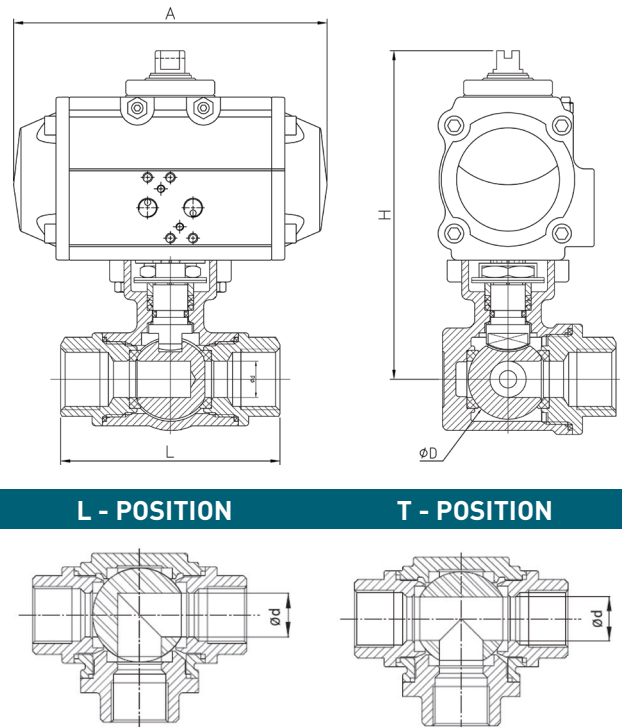
2WAY FLANGED BALL VALVE



SIZE		Valve	Actuator	ød	L [mm]	H [mm]	A [mm]	øRF	PCD [mm]	øD1	N-øH	Stem [mm]	ISO5211 PCD
Inch	mm												
1/2"	15A	BV2-15	GD-35	15	108	133	111	52	70	95	4-15	9	F03,F05
			GS-50			150	144					11	F03,F05
3/4"	20A	BV2-20	GD-50	20	117	150	144	58	75	100	4-15	11	F03,F05
			GS-50			150	144					11	F03,F05
1"	25A	BV2-25	GD-63	25	127	172	166	70	90	125	4-19	14	F05,F07
			GS-63			172	166					14	F05,F07
1-1/4"	32A	BV2-32	GD-63	32	140	172	166	80	100	135	4-19	14	F05,F07
			GS-75			189	213					17	F05,F07
1-1/2"	40A	BV2-40	GD-75	40	165	200	213	85	105	140	4-19	17	F05,F07
			GS-88			208	253					17	F05,F07
2"	50A	BV2-50	GD-75	50	178	200	213	100	120	155	4-19	17	F05,F07
			GS-100			224	296					17	F07,F10
2-1/2"	65A	BV2-65	GD-88	65	190	208	253	120	140	175	4-19	17	F05,F07
			GS-125			267	352					22	F07,F10
3"	80A	BV2-80	GD-88	80	203	223	253	130	150	185	8-19	17	F05,F07
			GS-125			282	352					22	F07,F10
4"	100A	BV2-100	GD-100	100	229	239	296	155	175	210	8-19	17	F07,F10
			GS-125			282	352					22	F07,F10
5"	125A	BV2-125	GD-125	125	356	295	352	185	210	250	8-23	22	F07,F10
			GS-145			311.5	438.6					27	F10,F12
6"	150A	BV2-150	GD-170	125	356	343	561.3	185	210	250	8-23	27	F10,F12
			GS-170			343	561.3					27	F10,F12
8"	200A	BV2-200	GD-190	125	356	374	601.8	185	210	250	12-23	36	F10,F14
			GS-210			393.8	639					36	F12,F16
10"	250A	BV2-250	GD-190	125	356	414	601.8	185	210	250	12-25	36	F10,F14
			-			-	-					-	-
12"	300A	BV2-300	GD-210	125	356	443.8	639	185	210	250	16-25	36	F10,F14
			-			-	-					-	-

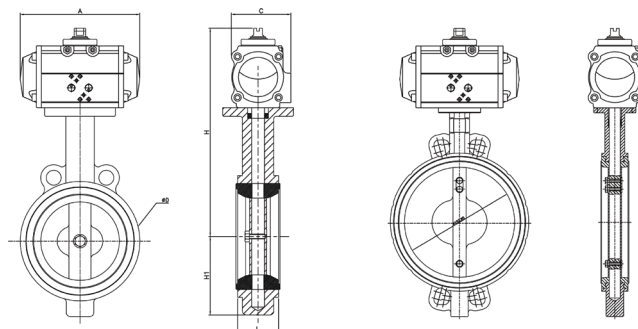
GD-SERISE / GS-SERISE

3WAY SCREWED BALL VALVE



SIZE		Valve	Actuator	Ød	L [mm]	H [mm]	A [mm]	Stem [mm]	ISO5211
Inch	mm								PCD
3/8"	10A	DV30-10	GD-35	11	72	110.5	111	9	F03,F05
			GS-50	11	72	127.5	144	11	F03,F05
1/2"	15A	DV30-15	GD-35	12	72	110.5	111	9	F03,F05
			GS-50	12	72	149.5	144	11	F03,F05
3/4"	20A	DV30-20	GD-50	15	83	131	144	11	F03,F05
			GS-63	15	83	153	166	14	F05,F07
1"	25A	DV30-25	GD-50	20	99	138	144	11	F03,F05
			GS-63	20	99	160	166	14	F05,F07
1-1/4"	32A	DV30-32	GD-50	25	112	144	144	11	F03,F05
			GS-63	25	112	166	166	14	F05,F07
1-1/2"	40A	DV30-40	GD-63	32	125	174	166	14	F05,F07
			GS-75	32	125	191	213	17	F05,F07
2"	50A	DV30-50	GD-63	38	149	185	166	14	F05,F07
			GS-75	38	149	202	213	17	F05,F07

BUTTERFLY VALVE



SIZE		Valve	Actuator	øD	L [mm]	H [mm]	H1 [mm]	A [mm]	Stem [mm]	ISO5211 (PCD)
Inch	mm									
1-1/2"	40A	BF2-40	GD-50	40	40	209	54	144	11	F03,F05
			GS-50			209		144		
2"	50A	BF2-50	GD-50	52	43	219	68	144	11	F03,F05
			GS-63			241		166		
2-1/2"	65A	BF2-65	GD-63	64	46	249	77	166	14	F05,F07
			GS-75			266		213		
3"	80A	BF2-80	GD-75	76	46	285	84	213	17	F05,F07
			GS-88			293		253		
4"	100A	BF2-100	GD-75	101	52	298	105	213	17	F05,F07
			GS-100			322		296		
5"	125A	BF2-125	GD-88	126	56	322	120	253	17	F05,F07
			GS-100			338		296		
6"	150A	BF2-150	GD-88	149	56	336	135	253	17	F05,F07
			GS-125			395		352		
8"	200A	BF2-200	GD-125	196	60	432	183	352	22	F07,F10
			GS-145			449		438.6		
10"	250A	BF2-250	GD-145	244	68	498	223	438.6	27	F10,F12
			GS-170			529		561.3		
12"	300A	BF2-300	GD-170	294	78	557	255	561.3	27	F10,F12
			GS-190			578		601.8		
14"	350A	BF2-350	GD-190	333	78	604	280	601.8	36	F10,F14
			GS-210			624		639		
16"	400A	BF2-400	GD-210	333	78	662	310	639	36	F12,F16
			GS-210			662		639		
18"	450A	BF2-450	GD-210	333	78	684	350	639	36	F12,F16
			-			-		-		



2014. 09 / designed by PRINPARK



(주) 지니스

우) 420-857 경기도 부천시 원미구 부천로 186번길 15 (춘의동)
전화 : 032-666-9946 | 팩스 : 032-666-9949
E-mail : ginicegood@ginice.co.kr
www.ginice.co.kr

GINICE Co., Ltd.

GINICE Bldg., (Chuneui-Dong) 15, Bucheon-ro, 186beon-gil, Wonmi-gu, Bucheon-City, Gyeonggi-do, Korea. (zip) 420-857
TEL : +82-32-666-9946 | 팩스 : +82-32-666-9949
E-mail : ginicegood@ginice.co.kr
www.ginice.com

GINICE FACTORY

경기도 김포시 대곶면 울생중앙로 206번길 92
92, Yulsaejungang-ro, 206beon-gil, Daegot-myeon, Gimpo-si, Gyeonggi-do, Korea.